



416

VENADO VIEW



4,309 SQUARE FEET OF CUSTOM LIVING

- Contemporary 2-Story Home with 5 Bedrooms, 5.1 Baths, and tandem 3-Car Garage
- Grand Foyer with double height ceiling and view through to the Living Area and Backyard
- Study/Home Office with full glass double doors off Foyer
- Open and harmonious plan - Living, Dining, and Kitchen
- Kitchen features high-end appliances, custom built cabinetry, island with storage and space for seating, and spacious pantry
- Primary Suite has vaulted ceiling and offers dramatic Bath with walk-in shower, soaking bathtub, separate vanities, and fabulous walk-in closet with built-ins
- Large Back Porch perfect for Indoor/Outdoor entertaining!
- Utility Room has wraparound countertop and space for 2nd refrigerator/freezer
- All 4 Secondary Bedrooms feature en suite Baths and walk-in closets
- All Jamestown Homes have Spray Foam Attic Insulation, Tankless Water Heater(s) and Uponor PEX Water Lines in the Grand Central Park Community



Greg Miller

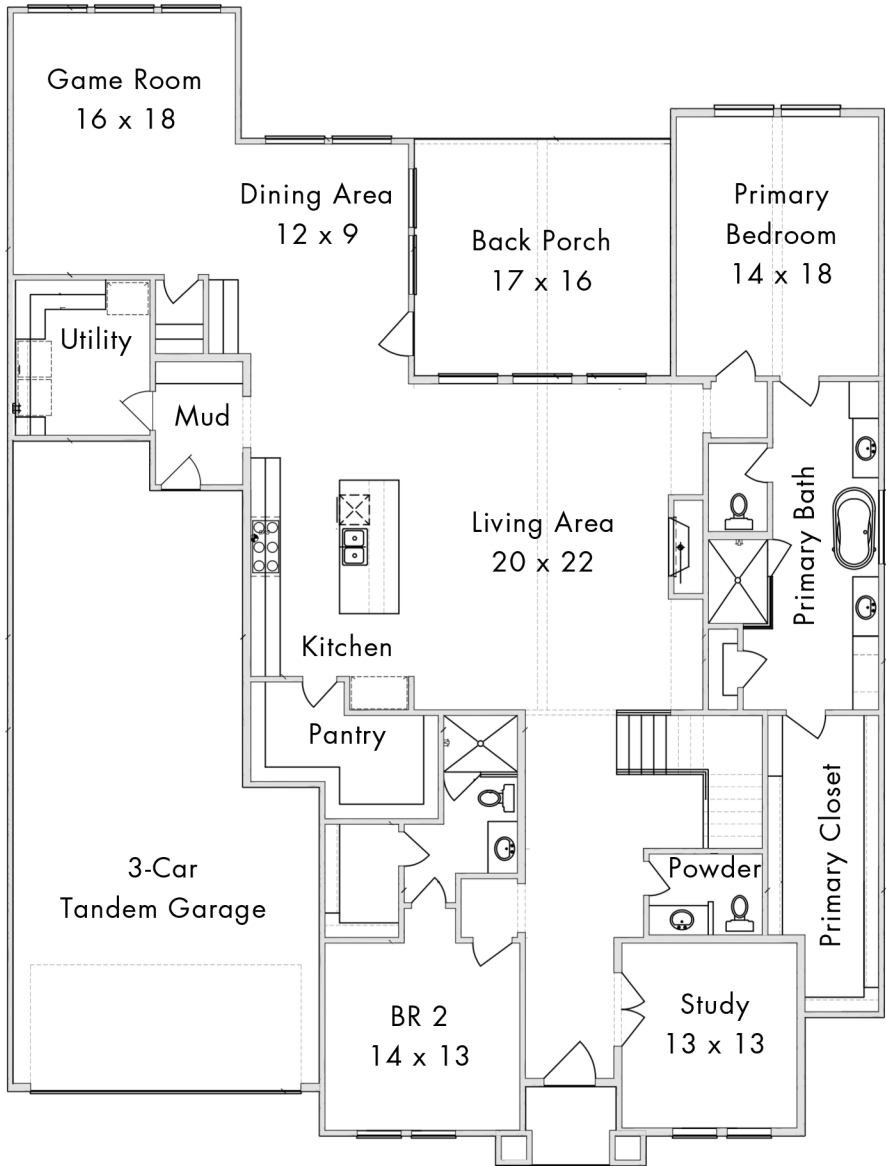
Greg.Miller@JamestownEstateHomes.com

832.651.7487

Jamestown
ESTATE • HOMES

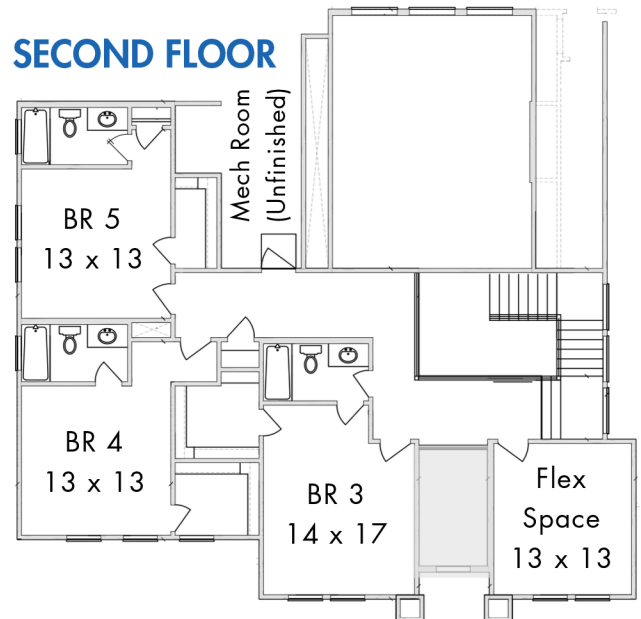
416 Venado View ♦ Conroe, TX 77304

FIRST FLOOR



4,309 SQUARE FEET
5 BEDROOMS/
5.1 BATHS, WITH
TANDEM 3-CAR
GARAGE

SECOND FLOOR



All Plans Copyrighted and subject to change. Photographs, renderings, and floor plans are intended to represent the overall design concept. Final home details, materials, and dimensions may vary.

