



431

# VENADO VIEW



## 3,473 SQUARE FEET OF CUSTOM LIVING

- Stunning 2-Story Home with 4 Bedrooms, 4 Baths, and split 3-Car Garage
- Grand Foyer with winding staircase, view through to the Living Area and Backyard
- Study with full glass double doors and adjacent full Bath
- Open and harmonious plan - Living, Dining, and Kitchen
- Kitchen features high-end appliances including a slide-in 48" range with double oven, custom built cabinetry, and spacious pantry
- Primary Suite offers dramatic Bath with an oversized shower, soaking bathtub, separate vanities, and 2 walk-in closets
- Large Back Porch - perfect for Indoor/Outdoor entertaining!
- Utility Room has adjacent storage space
- 3 Secondary Bedrooms and 2 Baths found up
- All Jamestown Homes in the Grand Central Park Community have Spray Foam Attic Insulation, Tankless Water Heater(s) and Uponor PEX Water Lines



**Greg Miller**

[Greg.Miller@JamestownEstateHomes.com](mailto:Greg.Miller@JamestownEstateHomes.com)

832.906.3801



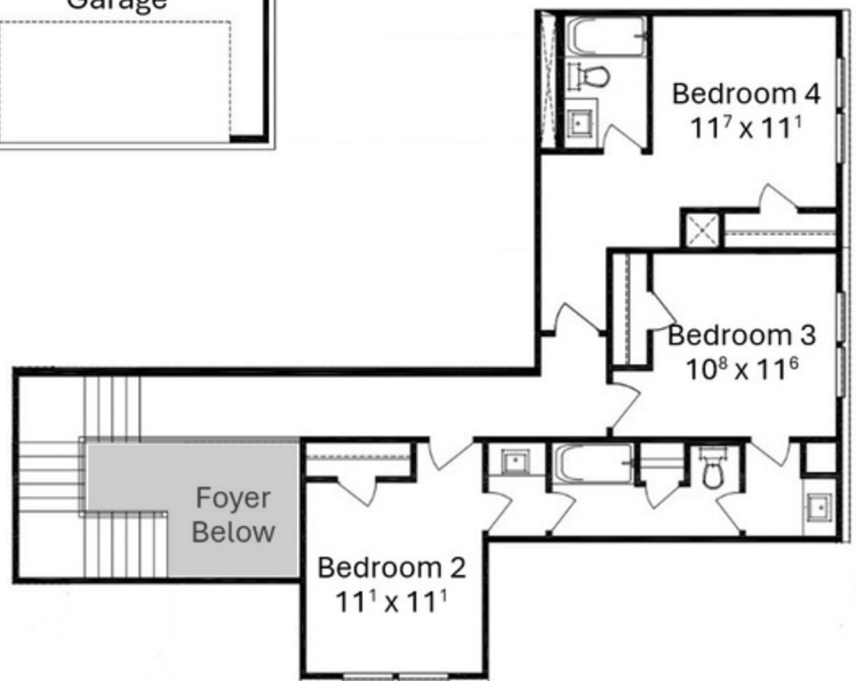
# 431 Venado View ♦ Conroe, TX 77304

## FIRST FLOOR



**3,473 SQUARE FEET  
4 BEDROOMS/  
4 BATHS, WITH SPLIT  
3-CAR GARAGE**

## SECOND FLOOR



Copyright Jamestown Estate Homes 2025. Subject to change. Photographs, renderings, and floor plans are intended to represent the overall design concept. Final home details, materials, and dimensions may vary.

