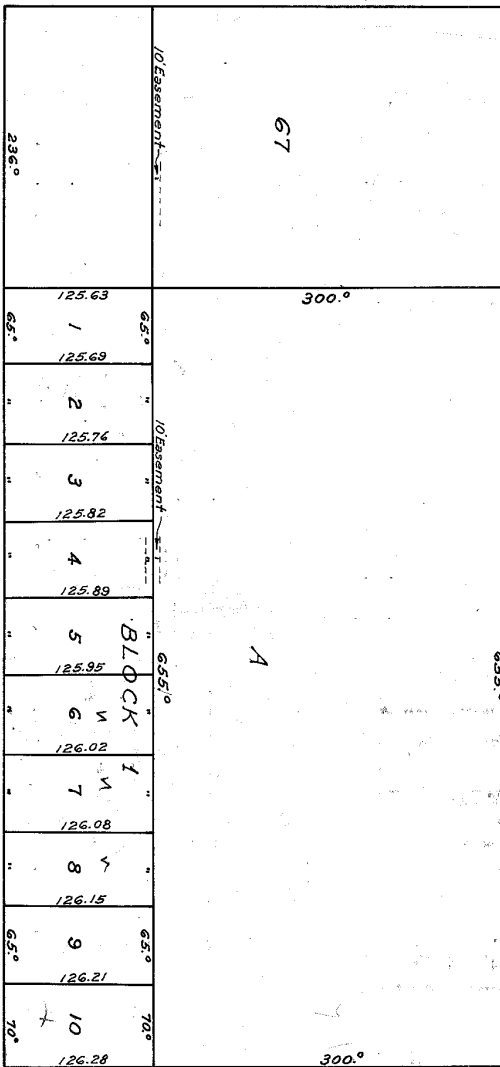


1  
2  
3  
4  
5  
6  
7  
8  
9  
10  
11  
12  
13  
14  
15  
16  
17  
18  
19  
20  
21  
22  
23  
24  
25  
26  
27  
28  
29  
30  
31  
32  
33  
34  
35  
36  
37  
38  
39  
40  
41  
42  
43  
44  
45  
46  
47  
48

60' STELLA LINK ROAD

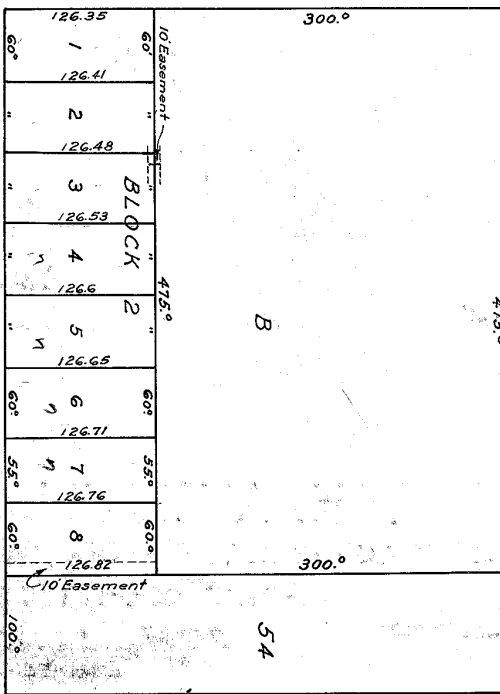
BELLAIRE



70' BRAES BLVD. 70'

60' AUDEN AVE.

BLVD.



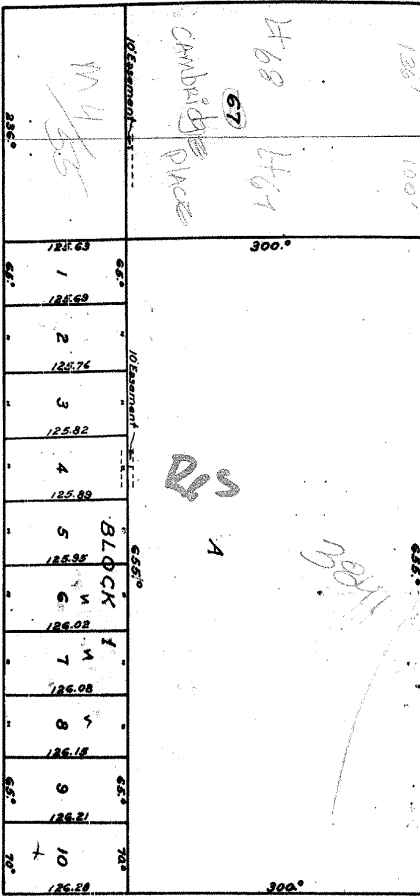
120.0°

BRAES HEIGHTS - FIRST SECTION  
A REVISED REPLAT OF LOTS 55 TO 66 INCL.  
IN CAMBRIDGE PLACE, IN THE CITY OF  
SOUTHSIDE PLACE, HARRIS COUNTY, TEXAS.  
JUNE 25, 1945 - BRAES HEIGHTS LAND CO. OWNERS - SCALE 1"=100'

RECORDER'S MEMORANDUM:  
All Or Parts Of The Text On This Page  
Was Not Clearly Legible For Satisfactory  
Recording

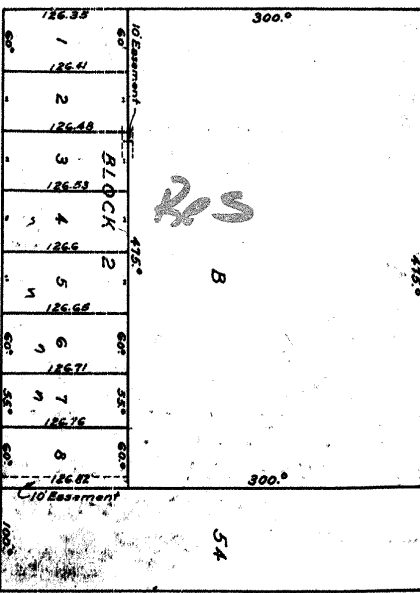
STELLA LINK ROAD

BELLAIRE



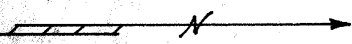
BRAES BLVD.

AUDEN AVE.



BLVD.

Booted as  
Red ~~Plots~~ A + B  
on File



BRAES HEIGHTS - FIRST SECTION  
A REVISED REPLAT OF LOTS 55 TO 66 INCL.  
IN CAMBRIDGE PLACE, IN THE CITY OF  
SOUTHSHORE PLACE, HARRIS COUNTY, TEXAS.  
JUNE 25, 1945 - BRAES HEIGHTS LAND CO. OWNERS - SCALE 1"=100'

OK

D 1163/737