



OVER 3700 SQ FT OF CUSTOM LIVING

- Contemporary Farmhouse with 4 Bedrooms, 4.1 Baths, and 3-Car Garage
- Entry with double doors leads to an inviting Foyer
- Oversized Living Area with cathedral ceiling, and clerestory windows allowing in an abundance of natural light
- Kitchen offers huge Pantry, and high-end appliances including 48" slide-in range
- Back Porch with access to Dining Room - perfect for Indoor/Outdoor entertaining!
- Primary Suite off private wing
- Primary Bath has separate vanities and 2 walk-in closets (1 closet has hidden storage space)
- All Bedrooms feature Ensuite Baths
- Spacious Utility Room with ample cabinet and countertop space



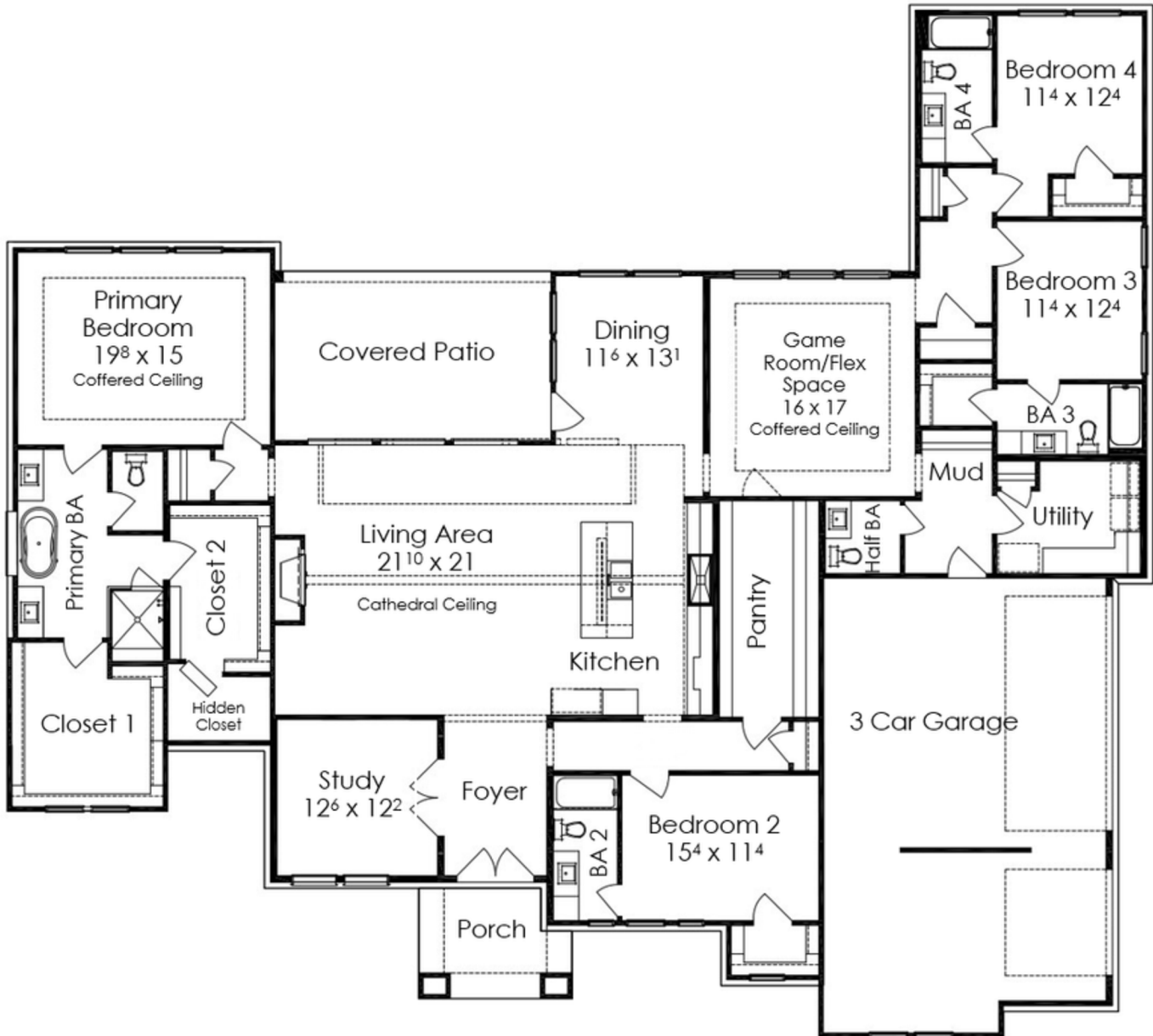
Ginnie LaBouchardiere

Ginnie.Lab@JamestownEstateHomes.com

832.841.4216

1027 Lake Breeze Dr ♦ Waller, TX 77484

3,764 SQUARE FEET ON OVER 1 ACRE
4 BEDROOMS/4.1 BATHS, WITH 3-CAR GARAGE



Copyright Jamestown Estate Homes 2025. Subject to change. Photographs, renderings, and floor plans are intended to represent the overall design concept. Final home details, materials, and dimensions may vary.



www.JamestownEstateHomes.com